

myWMS JIS

What is JIS?

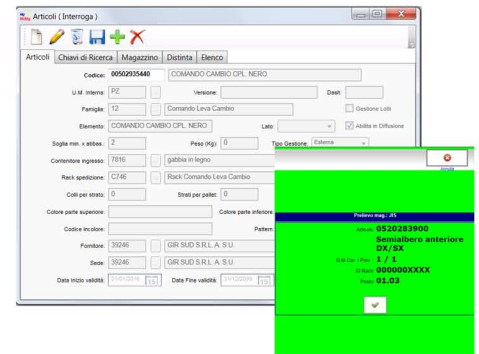
The automotive market is always more specializing to meet the demands of customers with customized products, and consequently a thousands of configurations for each model of car, and an increase of variations for each component. This situation showed the limit of the Just in Time model.

The Just in Sequence model arises adding the sequence to the delivery of components such to make irrelevant the quantity of variants. When JIS is implemented, modules are delivered in the same sequence of customer's production. This way, buyer companies do not need additional space across the production lines to order the components before the assembly. The use of 'Just In Sequence mode' allows them to sync the operations, minimizing wastage.



The Innovation Project

myWMS JIS is the Warehouse Management System solution that manages in an efficient and integrated way the flow of goods, supported by portable devices, barcode and RF and RFID systems. The JIS feature guarantees the full synchronization of material flows between the internal production and the warehouses in subservience to the production, having full traceability. It allows a continuous improvement and ensures that inward and outward processes are performed in the correct order, with the right materials at the right time. *The use of 'Just In Sequence mode' allows you to sync the operations, minimizing wastage.*



Market Segment

myWMS JIS has been developed for companies of all sizes that require optimal saturation of all areas and the discouragement of wastes in the different stages of production / logistics process. It allows to achieve an increase in productivity and high quality standards.

Advantage factors - Key Innovations

- Identification systems through the management of the barcode: each object is uniquely identified by a barcode
- Data collection through the use of wireless devices.
- Realtime monitoring of goods handled Control of all warehouse activities
- Full traceability of products.
- Independence from mobile devices: RF module used by the warehouse operators is a web oriented application
- Using the most advanced technologies Mobile Wireless Independence from mobile devices: RF module used by the warehouse operators is a web oriented application
- Optimal management of spaces, thanks to the warehouse mapping. - Automatic tasks generation and distribution based on rules and priority levels - "paperless" system: all the operations do not require paper.

Commercial challenge

Operating in a critic economic context, it is crucial be culturally and technologically different. The business challenge is to fulfil the requirements and meet the expectations of customers by providing high-level experts in the industry.

Publications and Customer References

